

Technical Data

Housing: material	Aluminium painted RAL 7000 Aluminox (high resistant finish (on request))
Type of protection:	II 2GD Ex d IIC T4/T5/T6 Gb Ex tb IIC T85°C/T100°C T135°C
IP protection:	IP66/67
Certificate:	BVI 14 ATEX 0068X IECEX EPS 14.0086X
Ambiente Temp.:	max. -50°C ... 85°C

Description

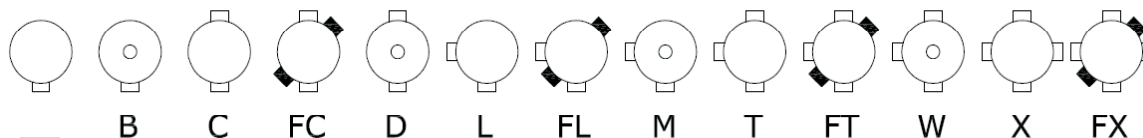
Exepd supplies a flexible enclosure system for the use in zone 1 and 21.

Inside the enclosure industrial control devices could be built in. The S. series are available with or without glass window in the cover.

The system is certified according to Directive **2014/34/EU** for zone 1 (gas group IIC) and for zone 21.

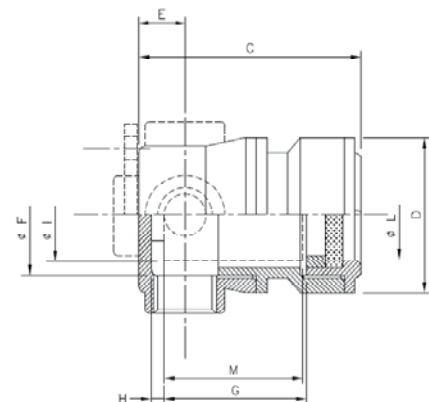
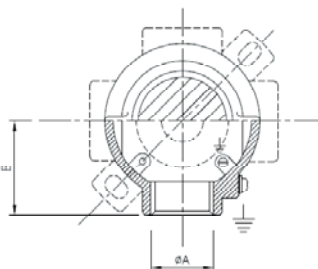


Selection chart for enclosure Type



S / ...

—	Basis type
O	O=with windows
—	Enclosure type
—	Enclosure size
—	Enlargement



Type	Cable entries	External dimensions in mm					Internal dimensions in mm			Build-in dim. in mm		Max. power loss in W (Ta=40°C)***		
		B	C**	D	L	E	F	G**	H	I	M**	T6	T5	T4
14	1/2"	40	61/121	70	38	20	48	24/84	8	44	22/82	7	9	15
24	3/4"	40	61/121	70	38	20	48	24/84	8	44	22/82	7	9	15
26	3/4"	50	66/121/141	90	50	20	68	25/85/100	8	64	23/78/98	8	10	17
36	1"	50	73/128/148	90	50	23	68	32/87/107	8	64	30/85/105	11	14	23
57	3/4"*** 1 1/2"	75	93/155/185	130	82	32	100	48/110/140	8	96	46/108/138	16	20	34
69	2"	83	104/165/205	145	96	36	112	54/115/155	9	106	52/113/153	20	25	43

* S57 / SO 57 with 3/4" hole only available with one hole

** First dim: = standard / second dim. = short enlargement / third dim. = long enlargement

*** Power losses given could be limited depending on using boxes SO Type with window or at higher ambient temperature!

Example:

SOB57/110 = Enclosure with window, hole 1-1/2" on bottom side on in base with small enlargement (Dim. G in chart), without wall brackets

SFT 26 = enclosure without window, 3 holes 3/4" bottom, left and top side, with wall brackets and without enlargement